

Double Cup Holder Assembly Instructions



Tools Required:

- Philips Screwdriver
- 5/32" allen wrench

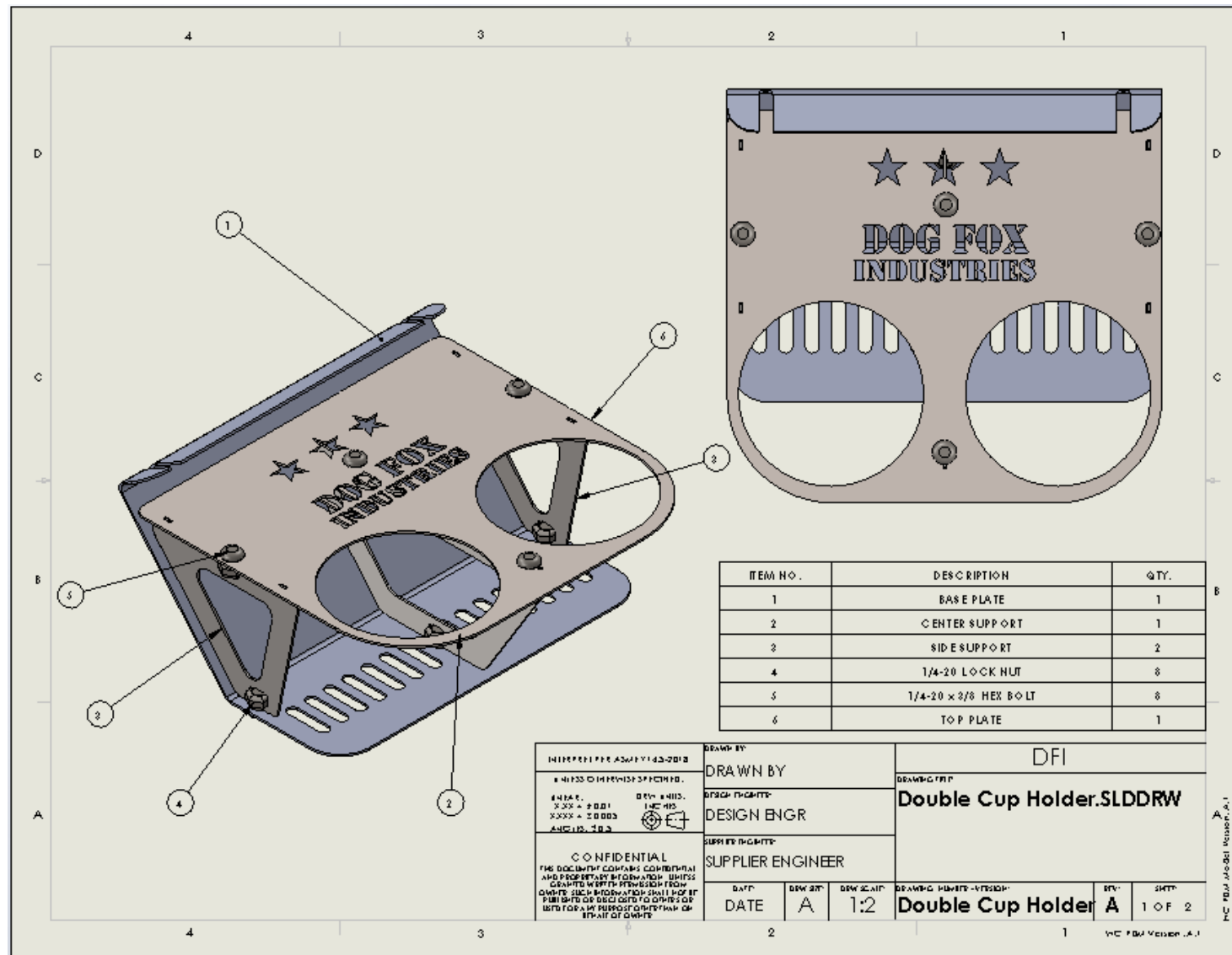
Optional Tools:

- Phillips offset screwdriver

Included Hardware

- (8) ¼-20 x ½" hex head screws
- (8) ¼-20 locknuts
- (2) 1" adhesive back foam strips

Double Cup Holder Assembly Instructions



Note: Three different Top Plate styles are offered but only one is shown in the instructions. The assembly steps are the same for all styles of the Top Plate.

Double Cup Holder Assembly Instructions

Instructions:

1. Remove backing and apply one (1) 1" adhesive backed foam strip as shown in Figure 2.
 - a. Strips should be attached on the lower back side surface of the Base Plate, approximately $\frac{1}{2}$ " from the edge and adjacent to the bottom radius.

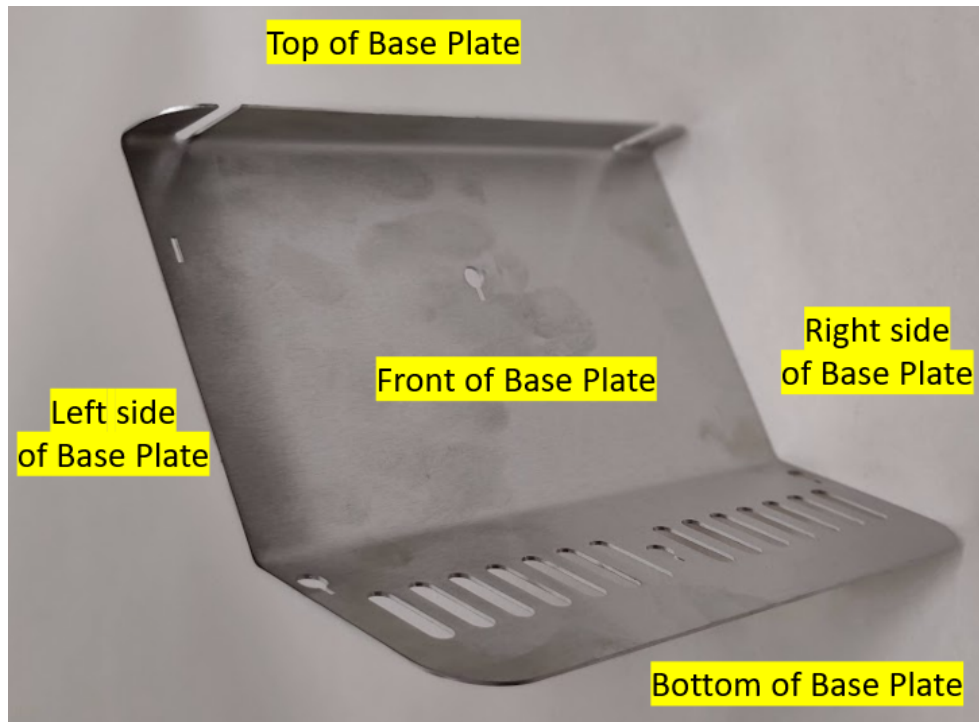


Figure 1.



Figure 2.

Double Cup Holder Assembly Instructions

2. Slide one (1) lock nut into the rear upper cutout on the Center Support. Keep the nut from falling out by pinching the nut from either side with one hand.



Figure 3.

3. Place the Center Support onto the Base Plate being sure the square keying features fall into the cutouts in the Base Plate.



Figure 4.

Double Cup Holder Assembly Instructions

4. Place a 1/4-20 hex head screw into the Base Plate hole from the backside and tighten finger tight while keeping the nut aligned in Center Plate. Tighten fully with the allen wrench.



Figure 5.

Double Cup Holder Assembly Instructions

5. Slide one (1) lock nut into the center bottom cutout on the Center Support. Keep the nut from falling out by pinching the nut from either side with one hand.
6. Place a ¼-20 hex head screw into the bottom center Base Plate hole from the bottom side and tighten finger tight while keeping the nut aligned in Center Plate. Tighten fully with the allen wrench while ensuring the square keying features fall into the square cutouts in the Base Plate.

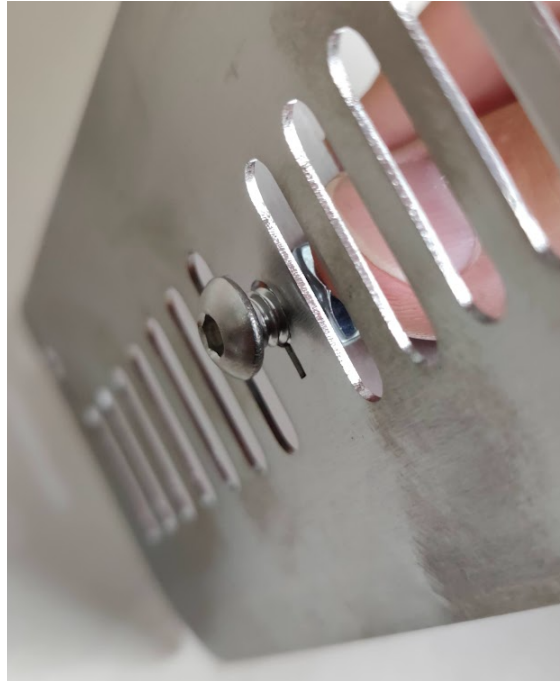


Figure 6.



Figure 7. Center Support Fully Attached to Base Plate

Double Cup Holder Assembly Instructions

7. Using a phillips screwdriver, remove the two screws from the dash above the glove box cubby hole.



Figure 8.

8. Place the Base Plate onto the dash, align the two slotted openings with the screw holes in the dash. Using a phillips screwdriver (or offset screwdriver) reinsert the screws and tighten. Be sure not to overtighten and strip out the holes.



Figure 9.

Double Cup Holder Assembly Instructions



Figure 10. Base Plate with Center Support attached to dash

9. Take one Side Support, slide one (1) lock nut into the bottom cutout on the Center Support. Keep the nut from falling out by pinching the nut from either side with one hand.
10. Place a ¼-20 hex head screw into the corresponding Base Plate hole from the bottom side and tighten finger tight while keeping the nut aligned in Center Plate. Tighten fully with the allen wrench while ensuring the square keying features fall into the square cutouts in the Base Plate. Repeat on both sides.



Figure 11. Both Side Plates installed

Double Cup Holder Assembly Instructions

11. Plate Top Plate face up on top of the three upright supports. Adjust the position of the Center Support and the Side Supports so the square keying features fall into the five openings in the Top Plate.



Figure 12. Five Square Keying Feature Openings

12. Starting with the left Side Support. Slide one (1) lock nut into the top cutout on the Side Support. Keep the nut from falling out by pinching the nut from either side with one hand.
13. Place a 1/4-20 hex head screw into the corresponding Top Plate hole from the top side and tighten finger tight while keeping the nut aligned in Side Plate. Tighten fully with the allen wrench while ensuring the two square keying features fall into the square cutouts in the Top Plate. Repeat on the right side.

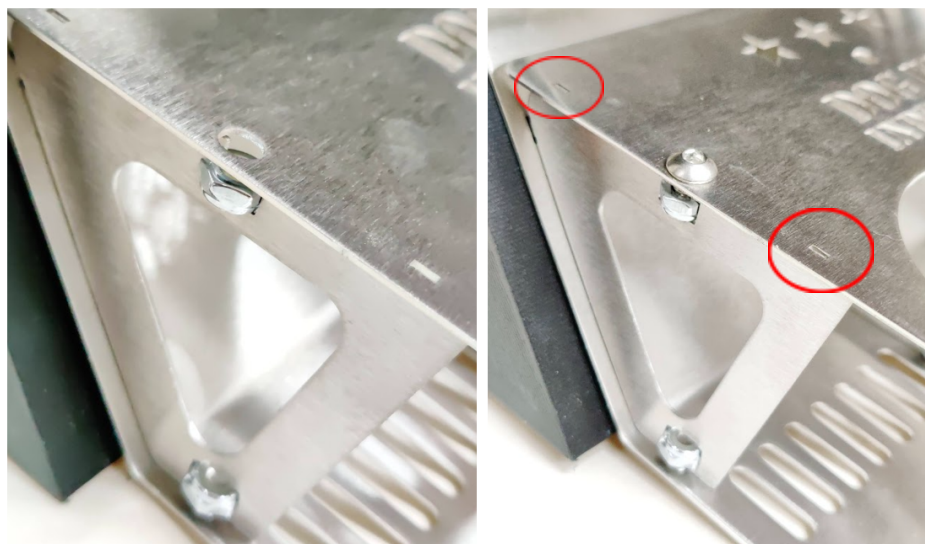


Figure 13.

Double Cup Holder Assembly Instructions

14. Starting with the rear hole of the Center Support. Slide one (1) lock nut into the top cutout on the Center Support. Keep the nut from falling out by pinching the nut from either side with one hand.
15. Place a 1/4-20 hex head screw into the corresponding rear Top Plate hole from the top side and tighten finger tight while keeping the nut aligned in Center Plate. Tighten fully with the allen wrench while ensuring the square keying features fall into the square cutouts in the Top Plate. Repeat on the front hole of the Top Plate.



Figure 14. Install Rear Screw and Nut prior to Front Screw and Nut

16. Double check to ensure all fasteners are tight and square keying features are engaged properly in their respective holes.
17. Enjoy your new Double Cup Holder!

If you have any installation or product questions please feel free to DM on Facebook or Instagram or send us an email at dogfoxindustries@gmail.com.